



TOTAL BLASTING

water jetting technologies

Contact Us For More Information.

 **+27114527578**

GET IN TOUCH

Total Blasting, 8 Simba Road,
Sebenza, Edenvale, South Africa.



ESTABLISHED IN 2006

Total Blasting is Africa's leading supplier of Water Jetting Equipment and Water Jetting Technology. Established in 2006 in South Africa, our priority is to provide our customers with state of the art water jetting equipment and solutions to maximise reliability, durability and safety for all our products and solutions.



OUR VISION

TO BE THE FIRST-CHOICE WATER JETTING TECHNOLOGY COMPANY PROVIDING THE SAFEST, HIGHEST QUALITY, INNOVATIVE AND ENVIRONMENTALLY RESPONSIBLE SOLUTIONS.



OUR MISSION

CREATE A GROUP OF KNOWLEDGEABLE AND MOTIVATED STAKEHOLDERS, DRIVEN BY A COMMON PASSION TO BE THE EXPERTS IN OUR FIELD.



**TOTAL
BLASTING**
water jetting technologies

TOTAL BLASTING

THE WORLDWIDE LEADER IN SOLUTIONS FOR CHALLENGING WATERJETTING APPLICATIONS



TOTAL BLASTING is Africa's leading supplier of innovative water jetting solutions for a wide range of applications including industrial cleaning, surface preparation, hydro-demolition and abrasive water jet cutting. Total Blasting is committed to providing customers care. The correct equipment, solutions, technical, safety and training for all water jetting applications.

EQUIPMENT

Total Blasting distributes the worlds leading water jetting brands which are Jetstream, AquaJet, MagTrack, StoneAge, Peinemann, Spir Star Hoses, Gerotto and TST. These include pumps, parts, accessories and safety. All equipment is built to last and easy to maintain.

SOLUTIONS

Total Blasting prides itself on providing the best solution for each application resulting in maximum productivity.

TECHNICAL

Total Blasting's technical department have dedicated engineers, a modern workshop and mobile service vehicles focusing on customer's needs and applications. This ensures seamless design, manufacture, assembly and testing of all equipment to suit our customer's needs.

SAFETY

Total Blasting is affiliated with the worlds leading water jetting standards, namely WJTA in the USA.

TRAINING

Total Blasting has certified water jetting instructors who offer a wide variety of either in house or on site training courses.

- *WJTA Courses
- *Operator or management
- *OEM Specific

FOR THE LOVE OF THE POWER OF WATER



**TOTAL
BLASTING**
water jetting technologies



TOTAL BLASTING

WATERBLAST UNITS

T Series Water Blasters

T-SERIES Water Blasters are designed and manufactured by Total Blasting. They are a development of nearly 20 years in the water jetting industry. Over the years we have refined each Series to adapt to changing technologies and applications. Each machine is inspired by the need to supply excellent quality equipment to the African market - in line with our Vision Statement. The T SERIES are tough, reliable and simple to use. The T3, T4 and T6 Series are powered by Jetstream, the world's leading supplier of high-pressure water jetting pumps.

T2 SERIES

**BOOSTER PUMP
STAINLESS STEEL**

**BATTERY BOX
LOCKABLE WITH
ISOLATOR SWITCH**

**160L LOCKABLE FUEL
TANK WITH GAUGE**

**4 INCH
SPARK
ARRESTOR**

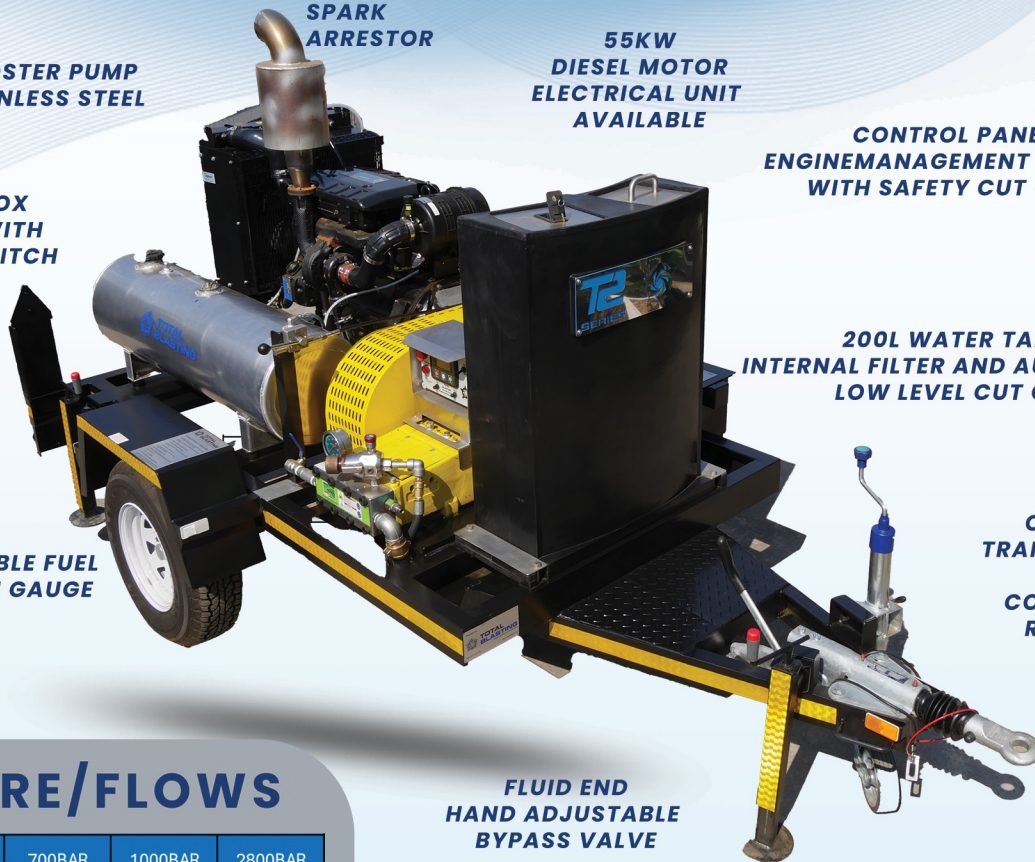
**55KW
DIESEL MOTOR
ELECTRICAL UNIT
AVAILABLE**

**CONTROL PANEL
ENGINE MANAGEMENT SYSTEM,
WITH SAFETY CUT OUTS**

**200L WATER TANK
INTERNAL FILTER AND AUTOMATIC
LOW LEVEL CUT OFF**

**OPTIONS
TRAILER MOUNT
SKID
CONTAINER
RIG SAFE**

**FLUID END
HAND ADJUSTABLE
BYPASS VALVE**



PRESSURE/FLOWS

Motor	500BAR	700BAR	1000BAR	2800BAR
56 kw	55 lpm	44 lpm	29 lpm	10.9 lpm

WATERBLAST UNITS



**TOTAL
BLASTING**
water jetting technologies



T3 SERIES



STAINLESS STEEL BOOSTER PUMP

4 INCH SPARK ARRESTOR

110KW-2150HP
150KW-200HP
DIESEL MOTOR
ELECTRICAL UNIT
AVAILABLE

ELECTRONIC CONTROL PANEL
ENGINE MANAGEMENT SYSTEM,
WITH SAFETY CUT OUTS

BATTERY BOX
LOCKABLE WITH
ISOLATOR SWITCH

200L WATER TANK
INTERNAL FILTER AND AUTOMATIC
LOW LEVEL CUT OFF

VARIABLE
SPEED

160L LOCKABLE FUEL
TANK WITH GAUGE

OPTIONS
TRAILER MOUNT
SKID
CONTAINER
RIG SAFE

PRESSURE/FLOWS

Motor	700BAR	1000BAR	1400BAR	2800BAR
110 KW	70 lpm	56 lpm	42 lpm	19 lpm
150 KW	88 lpm	78 lpm	59 lpm	28.8 lpm

FLUID END
HAND ADJUSTABLE
BYPASS VALVE
PRESSURE GAUGE
STAINLESS STEEL FITTINGS

*ELECTRIC DRIVE
*DIESEL DRIVE

T4 SERIES



STAINLESS STEEL BOOSTER PUMP

4 INCH SPARK ARRESTOR

194 HP OR 242 HP
294KW-394HP
DIESEL MOTOR
ELECTRICAL UNIT
AVAILABLE

CONTROL PANEL
ENGINE MANAGEMENT SYSTEM,
WITH SAFETY CUT OUTS

340L LOCKABLE FUEL
TANK WITH GAUGE

300L WATER TANK
INTERNAL FILTER AND AUTOMATIC
LOW LEVEL CUT OFF

VARIABLE
SPEED

BATTERY BOX
LOCKABLE WITH
ISOLATOR SWITCH

OPTIONS
TRAILER MOUNT
SKID
CONTAINER
RIG SAFE

PRESSURE/FLOWS

Motor	700BAR	1000BAR	1400BAR	2800BAR
194 KW		102 lpm	69 lpm	38 lpm
242 KW	191 lpm	122 lpm	96 lpm	45 lpm

FLUID END
HAND ADJUSTABLE
BYPASS VALVE
PRESSURE GAUGE
STAINLESS STEEL FITTINGS

*ELECTRIC DRIVE
*DIESEL DRIVE



**TOTAL
BLASTING**
water jetting technologies



UNx FLUID ENDS

Unmatched for performance and flexibility!

Patented UNx fluid end technology is at the heart of every Jetstream waterjetting pump. Since 1988, this remarkably innovative family of fluid ends has provided thousands of plants and industrial cleaning contractors with the simplest and most flexible waterjetting pump available.

The most valuable benefit of the UNx design is simplicity. Repairs can be completed quickly in the field, eliminating hours of downtime for service by specially trained mechanics. To tackle a variety of jobs with a single system, UNx fluid ends can be easily reconfigured on the jobsite to utilize higher pressure or flow.

With the UNx, Jetstream provides the flexibility to tackle all jobs, the superior performance to optimize efficiency and productivity, and the reliability to minimize operating costs and downtime.

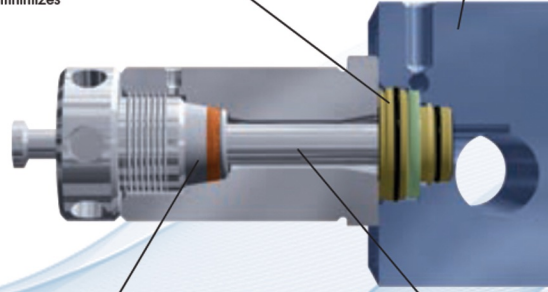
Simple & Dependable

Uni-Valve™ Cartridge

- self-contained suction and discharge valve assembly
- slip-fit for easy maintenance
- in-line design minimizes turbulence

Swing-Down Manifold

- easy access to valves
- weep holes indicate source of seal leaks



Plunger Packing Set

- three-piece and one-piece packings available
- tapered for easy removal
- water lubricated – no oil

Clamp-Style Plungers

- specifically designed for the rigors associated with each operating pressure
- clamp-on design for easy maintenance

Serviceable

Fewer parts ... faster servicing. No special tools or equipment required.



• 5-minute packing change*



• 15-minute valve cartridge change*

*Times for 3000/3600/4200 model

Change Operating Pressure in Minutes

UNx Fluid Ends are designed for fast pressure conversion in the field to fully utilize the power available for applications that require higher flow or pressure than a current setup allows.

Pressure conversions can be completed in under 30 minutes with only simple tools and have been performed in live demos **in under five minutes** using power tools.

1 Disconnect hoses



2 Remove plunger clamps



3 Disconnect lube lines



UNx FLUID ENDS

**Fewer Parts,
 Fewer Problems**



Jetstream

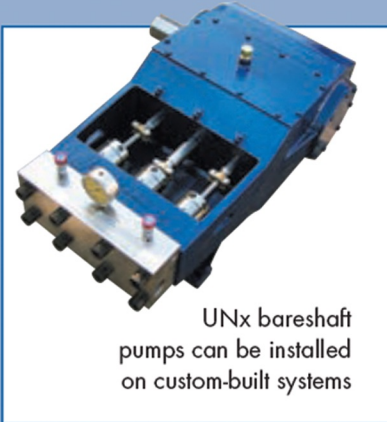


the others

UNx Fluid Ends
 that fit most makes
 and models

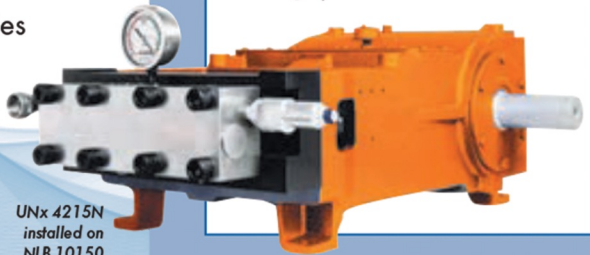
**There are Several Ways to Use the
 Advantages of the UNx[®] Fluid End.**

Every Jetstream unit
 includes UNx technology



UNx bareshaft
 pumps can be installed
 on custom-built systems

UNx upgrades bolt on to other
 manufacturer's pumps to add
 the UNx Advantage to
 existing systems



UNx 4215N
 installed on
 NLB 10150



Additional fluid ends
 allow one system to do
 the work of many

**Operating pressures from 5,000 psi (344 bar)
 to 40,000 psi (2750 bar)**

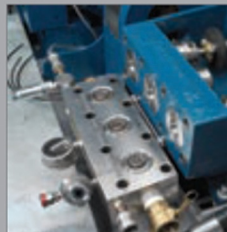
UNx pumps are ATEX
 Zone 2 approved.

A single Total Blasting system can do the work of many

4 Remove water lube fittings



5 Remove just 8 bolts to lower hinged manifold



6 Slide out stuffing boxes
 containing packing and
 plungers



7 Remove hinge and
 lift off manifold



install the appropriate fluid end by reversing the steps



Jetstream success is attributed to the following:
Safety – Productivity – Reliability – Serviceability
Simplicity – Versatility

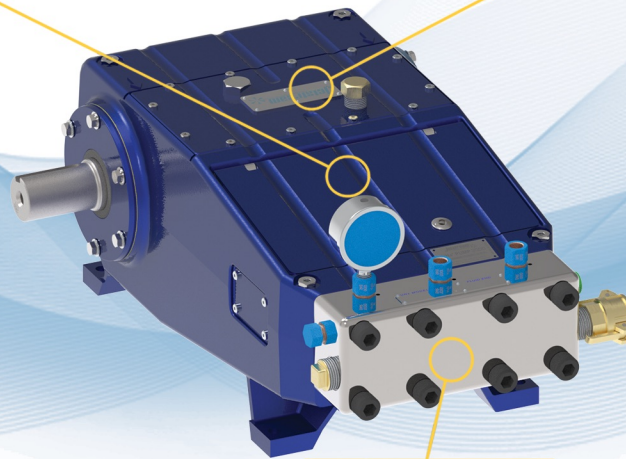
These engineering requirements run through the entire product range with simple and quick replaceable cartridges for easy maintenance of pumps, guns, and control valves.

UNx™ BARESHAFT PUMP

3000 SERIES

LOCKING ROD BOX
For increased safety, equipment protection, and ease of service

TRIPLEX PLUNGER DESIGN
Three crankshaft propelled plungers for powerful and smooth operation on demanding duty cycles



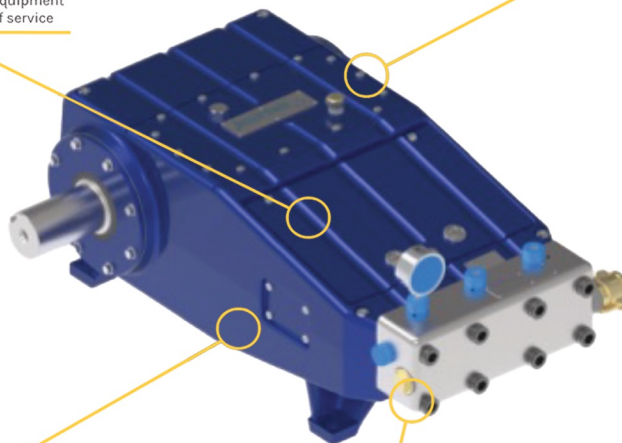
UNx FLUID END TECHNOLOGY
Quick in-the-field valve changes decrease downtime

UNx™ BARESHAFT PUMP

4000 SERIES

LOCKING ROD BOX
For increased safety, equipment protection, and ease of service

TRIPLEX PLUNGER DESIGN
Three crankshaft propelled plungers for powerful and smooth operation on demanding duty cycles



EXTERNAL WATER LUBE SYSTEM
Easily adjust water lube for optimal wear life.

UNx FLUID END TECHNOLOGY
Quick in-the-field valve changes decrease downtime



JETSTREAM TOOLS



JETSTREAM

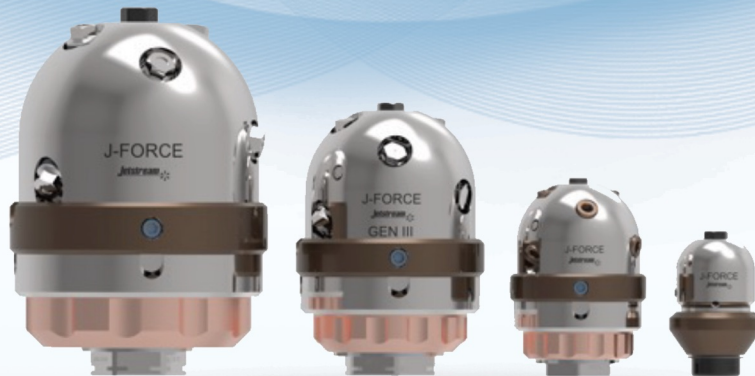
X15 Swivel

Speed adjustable pipe cleaning swivel tool is self-powered, 360 degree rotating tool designed for cleaning medium to large diameter pipes.



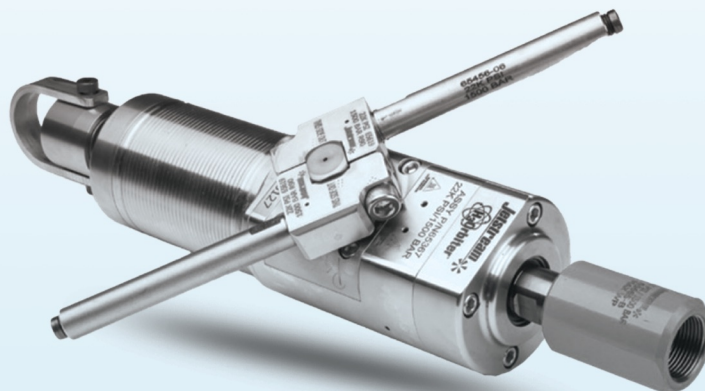
J-Force - Pipe Cleaning Nozzles

The speed adjustable J-Force tool is a self-powered rotating tool designed to easily navigate and clean pipes with two, three, four, six -inch bends and water bearings.



H3 Orbiter

Speed adjustable H3 Orbiter is a 3-D water blasting tool designed to efficiently clean tanks and vessels. Performs a complete 360 degree clean with pressures up to 1500 bar.



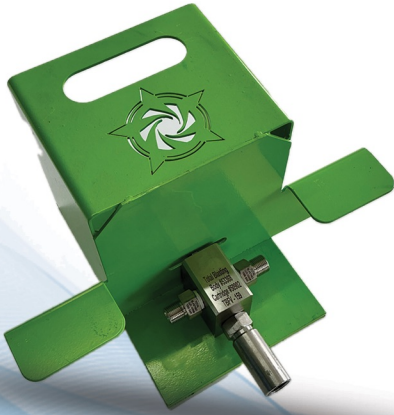
**TOTAL
BLASTING**
water jetting technologies



ACCESSORIES

Our water blasting accessories include everything you need for a complete setup—high-quality foot pedals, precision-engineered guns, durable nozzles, accurate pressure gauges, and versatile fittings. These components ensure optimal performance, safety, and adaptability for any water blasting operation.

FOOT VALVES



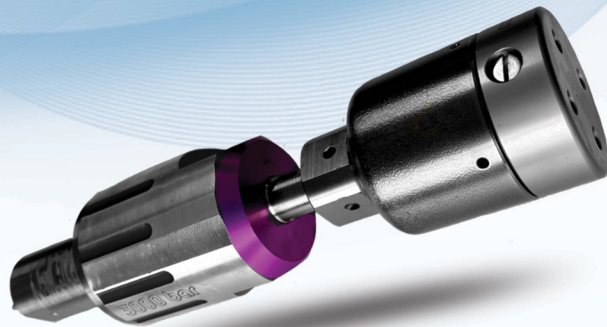
GUNS



ASSORTED FITTINGS



NOZZLES



PRESSURE GAUGES



ASSORTED HOSES



WHIP CHECKS



**TOTAL
BLASTING**
water jetting technologies



JETSTREAM

HOSES & LANCES

Total Blasting stock a wide range of hoses and lances to ensure the job gets done right, the first time.

We are very proud to be associated with SpirStar, the leading international manufacturer of ultra-high pressure thermoplastic hose with spiralized steel wire reinforcements for pressure ranges from 250 bar to 4000 bar and inner diameter of 3mm to 32mm.

THE ULTIMATE HIGH PRESSURE PERFORMANCE



Rubber Hose 1000 Bar

- HB-15 - 1000 bar - OD 1/2" - 20m - 1/2" BSPf and 1/2" BSPf
- HB-20 - 1400 bar - OD 1/2" - 20m - 1/2" BSPf and 1/2" BSPf
- HB-15 - 1000 bar - OD 1/2" - 20m - M36C2X2F and M36C2X2F

Flex Hose 1000 Bar

- HF.15-4/2-01 - 4/2 Flex Lance - OD 8.2 - ID 4.1 - 15m - 1/4" BSPf and M7m
- HF.15-5/2-01 - 5/2 Flex Lance - OD 9.8 - ID 5.2 - 15m - 1/4" BSPf and 1/4" BSPm
- HF.15-6/2-01 - 6/2 Flex Lance - OD 11.2 - ID 6.4 - 15m - 1/4" BSPf and 1/4" BSPm
- HF.15-8/2-01 - 8/2 Flex Lance - OD 13.7 - ID 7.9 - 15m - 1/4" BSPf and 3/8" BSPm



Flex Hose 2800 Bar

- HP.40-4/4-01 - 4/4 Flex Lance - OD 10.3 - ID 4.0 - 15m - 9/16" unfihm and 3/8" unfihm
- HF.40-5/6-01 - 5/6 Flex Lance - OD 14.4 - ID 4.6 - 15m - 9/16" X18 unfihm and 3/8" X18 unfihm
- HF.40-8/6-01 - 8/6 Flex Lance - OD 18.8 - ID 7.7 - 15m - 9/16" X18 unfihm and 3/8" X18 unfihm
- HF.40-3/6-01 - 3/6 Flex Lance - OD 9.1 - ID 3.0 - 15m - 3/8" X24 unfih and 3/8" X24 unfih



Rigid Lances 1000 Bar to 2800Bar

We stock a wide range of stainless-steel lances.



WELCOME TO THE WORLD OF CUTTING EDGE HYDRODEMOLITION

Explore the sustainable way to protect and preserve concrete constructions.
Introducing the most versatile and advanced products on the market.
Meet Aquajet Systems – the innovator and market leader.

AQUAJET CUTTER 410 A

- *Small, compact and suitable for all kinds of operations
- *Electric motor and articulated arm
- *Easy to reach horizontal, vertical and overhead areas



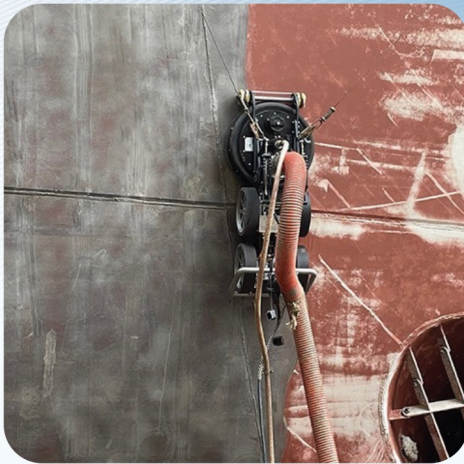
AQUAJET ERGO GO

- *Innovative and powerful alternative for the most challenging spaces to work
 - *Can be used in nearly any location
- *Easily mounted to any vertical, horizontal or overhead surface
 - *Convenient, portable and light weight
 - *The formidable Hydro Demolition solution



MAGNETIC CRAWLER

With high-pressure tools operating up to 3000 bar, MagTrack ensures safer, faster, and more cost-effective cleaning solutions for industrial, maritime, and offshore applications.



WHY CHOOSE MAGTRACK?

Designed with efficiency, safety, and versatility in mind, MagTrack is your ultimate cleaning solution:

- *Efficient: Set up in just 30 minutes.
- *Multi-Purpose: Modular system adapts to your application needs.
- *Compact: Fits through a 24-inch manhole for interior cleaning.
- *Cost-Effective: No scaffolding or cherry pickers needed.
- *Safe: Remotely operated for reduced worker risk.
- *Low Maintenance: Built for reliability in tough environments.
- *Certified Excellence: Optional ATEX Zone II and NORSOK certification available.

APPLICATIONS

- *Industrial
- *Maritime
- *Tank External & Internal
- *Offshore

OPTIONS

- *Blast Can
- *Water & Grit blasting
- *Swing arm





PEINEMANN
EQUIPMENT



WORLD WIDE LEADER IN BUNDLE HANDLING AND TUBE CLEANING

1-XS Single Lance Feeder

- *The most versatile and flexible lance feeder
- *Easily configured for both lance and pipe cleaning
- *Multi speed motor allowing for greater speed and power control
- *Compatible with a wide range of hose sizes, making it adaptable to different pipe and tube sizes



3-TLX

- *Industry leader in versatility and adaptability
- *Modular design enables rapid assembly and simple maintenance
- *Easily convertible between 1 lance and 5 lance feeder

SELF-PROPELLED BUNDLE EXTRACTOR

- *Highly efficient, powerful and safe
- *Increases operation efficiency during busy shutdown
- *Agile design with tight turning radius
- *Diagonal drive for tight space navigation.
- *Low mast height (3.4 meters) operated within low structures within the plant.



Aerial Bundle Puller



TOTAL BLASTING
water jetting technologies



PEINEMANN

WORLD LEADING MANUFACTURES OF WATERBLAST TOOLS



BARRACUDA

For use on automated and hands-free equipment, the Barracuda is a rotary shotgun nozzle ideal for cleaning tough materials like coke or rubber.

1000 bar, 1400 bar and 2800 bar

TORUS

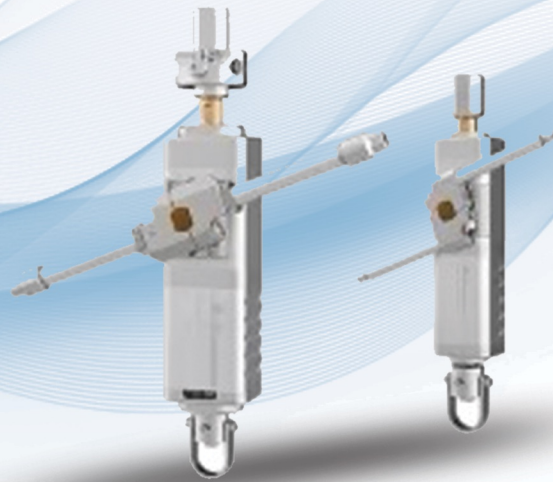
Torus 3-D cleaning tools are designed to easily adjust to a wide range of pump capacities, working pressures, and small-entry cleaning applications.

Manifold

*Low flow

*Med Flow

*High Flow

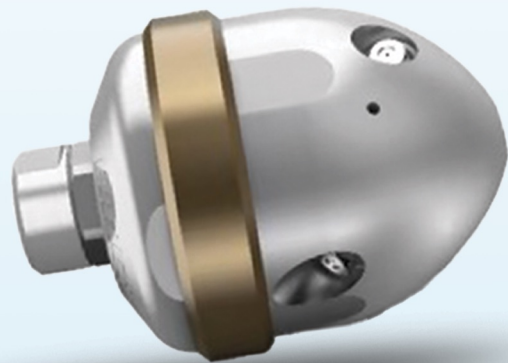


BANSHEE

The industry's favorite tube cleaning tool, Banshees handle pressures up to 40K psi/2800 bar and can be configured for any application.

BADGER 2,4 & 6 Inch

The industry's favorite pipe cleaning tool, Banshees handle pressures up to 40K psi/2800 bar and can be configured for any application.





WORLD LEADING SAFETY



SAVING LIVES

At TST Sweden, safety always comes first. TST specialize in high-performance protective clothing for water jetting, designed to keep operators safe in the most demanding conditions. By enhancing protection and performance, we help water jet professionals return home safely every day. With high-quality CE-certified PPE for water jetting, proven expertise, and a committed team, we make water jetting safer.



GAMMA KIT



TOP



APRON



SAFETY SHROUDS



HELMET



GLOVES



GAITERS

WORKPLACE SAFETY SOLUTIONS



CE-certified PPE for water jetting, proven expertise, and a committed team, we make water jetting safer.



TOTAL BLASTING
water jetting technologies



TST SAFETY

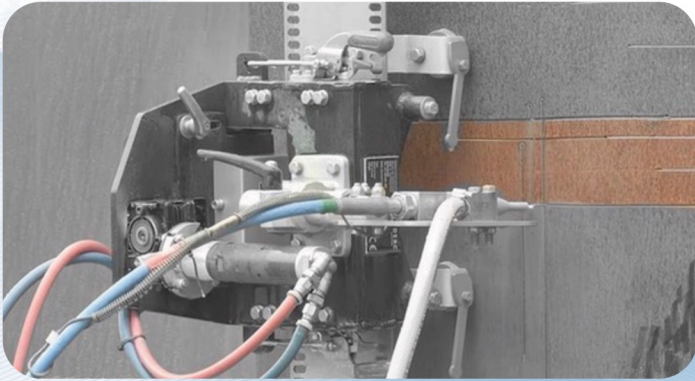
SPECIALIZED EQUIPMENT

Cold Cutting System - Salotech



Abrasive Pipe Cutter

The Flexa-Jet Chain Manipulator is an abrasive pipe cutter, designed for cutting pipes with a minimum diameter of 168 mm. This innovative tool clamps securely around the pipe using a chain tensioning system. Once mounted, a carriage with a cutting nozzle travels along the chain, guided by a powerful air motor and gearbox, ensuring a steady, consistent cutting speed.



Hurricane Hydro-Jet-Mower

The Hurricane Hydro-Jet-Mower is a rotating surface cleaner for cleaning floors, grates, decks or other surfaces with high pressure water jets.

The base is a stainless steel 3-wheel carriage with an ergonomic adjustable push bar.

Rated for 2800 Bar.



**TOTAL
BLASTING**
water jetting technologies



SPECIALIZED EQUIPMENT

APPLICATIONS

Abrasive Cold Cutting, Drill Pipe and Riser Cleaning, Heat exchanger and Tube Cleaning, Heat Exchanger Handling, HydroDem, Machinery Washdown, Paint booth and skid cleaning, Pipe cleaning and Pipe Flushing, Surface Preparation and Vessel and tank cleaning.



ABRASIVE COLD CUTTING



COAL FACE DRILLING



DRILL PIPE & RISER CLEANING



PIPE CLEANING & PIPE FLUSHING



HEAT EXCHANGER TUBE CLEANING



SURFACE PREPERATION



HEAT EXCHANGER/BUNDLE HANDLING



HYDRO-DEMOLITION



MACHINERY WASHDOWN & CLEANING



SEWER CLEANING



VESSEL & TANK CLEANING



PAINT BOOTH & SKID CLEANING

APPLICATIONS



**TOTAL
BLASTING**
water jetting technologies

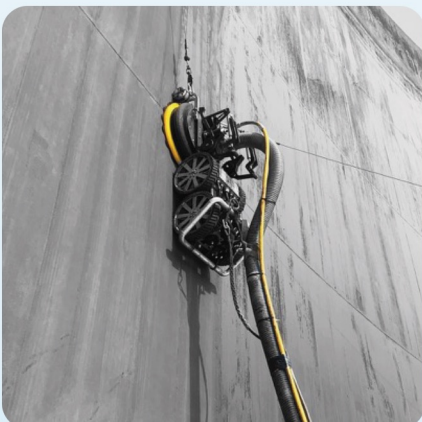
Founded in 2008, Total Site Solutions is the leading water blast rental business in Southern Africa.

PUMPS, ACCESSORIES, EQUIPMENT, TECHNICIANS



FLEET INCLUDES

- T3 Series HP and UHP Pumps
- T4 Series HP and UHP Pumps
- A410 AquaJet Robot
- AquaJet Ergo's and Spines
- SPE20ES ShotBlasting machines
- MagTrack Crawler
- Peinemann XS



**PUMP PRESSURES
FROM
700 BAR to 2800 BAR**

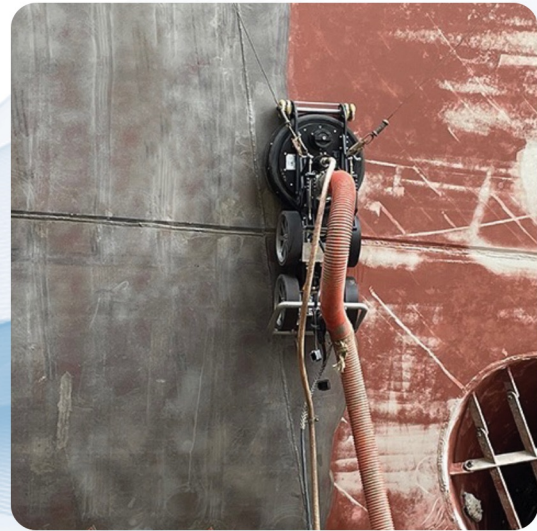
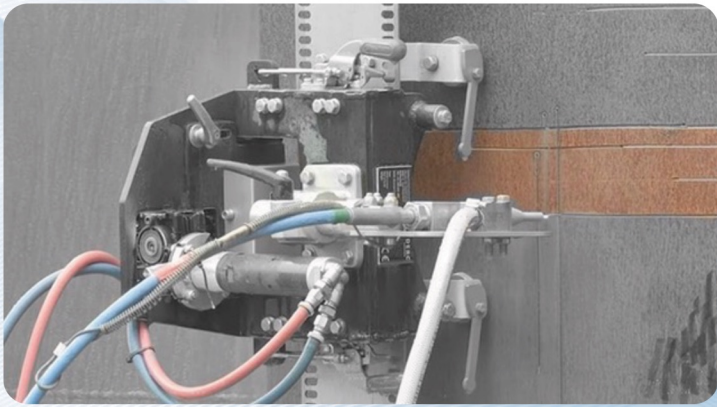




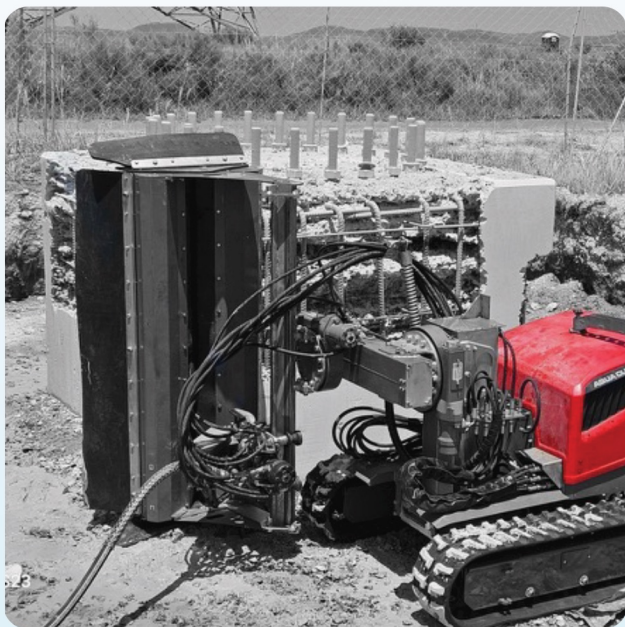
TOTAL ENVIRO SOLUTIONS

Total Enviro Solutions a company with its roots in industrial cleaning.

Founded in 2010. We supply state of the art industrial cleaning and surface preparation equipment; sourced from our vast network of international and local suppliers. We pride ourselves in the equipment and expertise we offer, prioritising efficiency, safety and the environment. We work closely with our customers to ensure the technology, equipment and human resources they are using are utilized to their maximum capacity.



***We specialize in the following equipment
COLD CUTTING, HYDRODEMOLITION,
MAGNETIC MAGTRACK, SHOTBLASTING***



**TOTAL
BLASTING**
water jetting technologies



ENVIRO SOLUTIONS

OFFSHORE OFFERING

Over the past 20 years Total Blasting has worked closely with many international companies; offering specific applications to assist with their offshore presence.

WATER BLAST UNITS

Total Blasting offers the best WaterBlast units available. Rig Safe and DNV Certified, or ATEX Certified. All to powered by Jetstream. 750-2800 Bar - to rent or purchase.



OFFSHORE DECK CLEANING

Offshore Deck Cleaning made simple by highly skilled technicians and state of the art automated machinery.



COLD CUTTING

Abrasive Cold cutting is flame free so ideal for highly flammable areas like oil rigs and crude oil storage facilities.

DRILL PIPE & RISER CLEANING

Using high pressure RIG SAFE pumps and automated machinery from the USA or Europe, we efficiently remove solidified drilling mud from drill pipe internals.



**TOTAL
BLASTING**
water jetting technologies



OFFSHORE OFFERING

SERVICE CENTRE

Since 2006 we have sold nearly 500 BareShaft pumps and over 370 completed units. Due to the nature of what we do, all these units need continual repairs and maintenance. That's why we have invested in a comprehensive Service Center that caters for all our customers needs. Our workshop technicians have been with us for many year and know the workings a pump intricately.



We Specialize In

- New Builds
- Refurbishments
- Custom builds
- Specialized Equipment
- General repairs and maintenance
- *Two Day Tech Course



**TOTAL
BLASTING**
water jetting technologies



SERVICE CENTRE

TRAINING ACADEMY

As a leading supplier of Water Jetting Equipment and Technology, we realise the importance of optimising the operation of the equipment we represent. With this in mind, we have invested in a world class training facility, affiliated with WJTA.

Total Blasting ensures the correct safety and training standards associated with Water Jetting. We offer both theory and practical courses, covering all aspects of Water Jetting. All courses adhere to the International Best Practice Water Jetting Standards and our trainers are accredited with International Affiliations.

Anton Leimecke who has over 20 years of experience co-ordinates the training. He has worked with an array of Water Jetting applications, and has both international and domestic exposure.



THEORY

- Detailed overview of the Recommended Practices for the use of High Pressure Water Jetting Equipment in a classroom environment
- Audio Visual presentation on Water Blasting safety

PRACTICAL

- Live Water jetting presentation & procedures shown for 1000 - 2800 BAR pumps

CERTIFICATION

EACH CANDIDATE ON THE COMPLETION OF THE COURSE WILL BE AWARDED WITH A CERTIFICATE STATING THEY THEY HAVE ATTENDED THE WATER JETTING COURSE



We Offer 3 Courses

- *Pump Operating Training
- *Mechanical, technical, safety and operation training
- *Two Day Supervisory Course.

WE ALSO NOW OFFER BUNDLE HANDLING COURSES



WJTA HYDROBLAST CERTIFIED TRAINER

**WE HAVE THE ONLY WJTA
TRAIN THE TRAINER
CERTIFIED TRAINER IN AFRICA**



**TOTAL
BLASTING**
water jetting technologies



TOTAL PRODUCTS

Total Product Solutions Group ("TPS Group") is the holding company for a collection of specialised businesses operating in the water-jetting, industrial cleaning, and surface-preparation sectors across Africa. Founded in 2006, the Group has grown from a small abrasive-supply business into Africa's leading water-jetting technology company, known for high-pressure pump manufacturing, specialist contracting, equipment rental, and distribution of globally recognised brands. With nearly two decades of sustained growth, TPS Group today serves more than 120 customers in 15 countries, delivering high-quality, safe, innovative, and environmentally responsible water-jetting solutions.

FOR THE LOVE OF THE POWER OF WATER



Total Blasting, founded in 2006, is Africa's leading Water jetting Technologies company, specializing in high and ultra-high pressure Water Jetting applications for industrial cleaning and surface preparation. Today Total Blasting has a footprint in over 20 African countries and has supplied over 400 water blast units to the industry. With head office in Johannesburg, we have a world class facility to manufacture and distribute an array of water jetting equipment and technologies.

Total Site Solutions was established in 2008 as a water jetting rental company. Over the years the rental offering has expanded to 25 high and ultra-high water jetting pump and related accessories. Our highly skilled technicians are available to complement our equipment and make the job easier for our clients



In 2014 Total Enviro Solutions was established to pioneer specific water jetting technology applications like HydroDemolition, ShotBlasting, ColdCutting and MagTrack Magnetic Robots. We partner with our customers to ensure complicated tasks are handled correctly with the best equipment and technical assistance. The business covers an array of industries like construction, marine, offshore and petrochemical.

Total Road Products was established in 2010 as an abrasive distributing business. Over the years it has evolved into a leading road furniture distributor throughout Southern Africa; supplying glass beads, garnet, road studs and solar products to the industry.



**TOTAL
BLASTING**
water jetting technologies

TOTAL PRODUCTS

