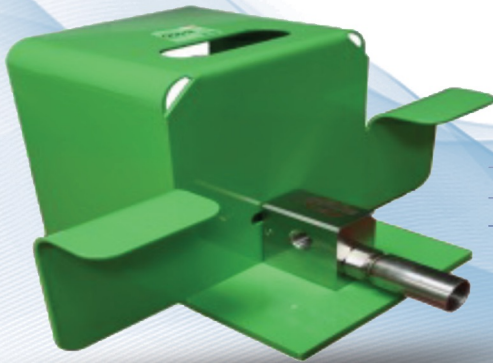


DURASAFE™ FOOT GUNS

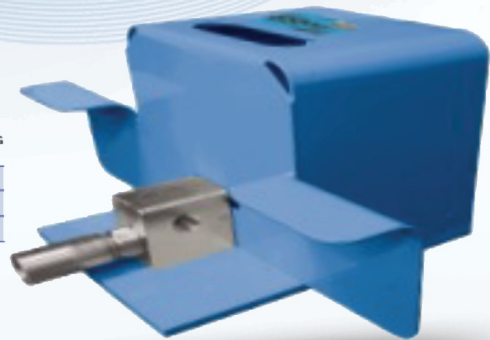
DUMP STYLE

Ideal for a variety of waterblast tube cleaning applications, the DuraSafe family of foot-operated dump style control guns allow the operator to have complete control of the pressure at all times.

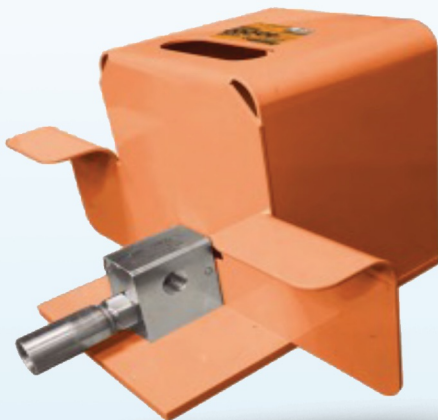
- 30-second field replaceable cartridge design for minimal downtime
- Safest foot valves in the industry! Custom safety cage and thick blast wall protect operator better than any foot control gun in the industry
- Pipe threaded (NPT) inlet and outlet
- Built-in "wings" protect high pressure hoses and fittings from external damage
- All pressure-bearing components precision machined stainless steel
- Threaded diffuser to route dump water for collection or disposal



PART NO.	MODEL	INLET & OUTLET CONNECTION*	DIFFUSER OUTLET CONNECTION	MAXIMUM FLOW		DIMENSIONS (H X W X D)		MAX. OPERATING PRESSURE	
				gpm	lpm	in	mm	psi	bar
55435	DCF-15-1/2"	1/2" NPT Female	3/4" NPT Female	35	130	7.9 x 14.8 x 13.3	200 x 375 x 338	15,000	1034
59374	DCF-15-3/4"	3/4" NPT Female	1" NPT Female	75	285	7.9 x 14.8 x 13.5	200 x 375 x 343	15,000	1034
59376	DCF-15-1"	1" NPT Female	1 1/4" NPT Female	125	475	7.9 x 14.8 x 15.5	200 x 375 x 393	15,000	1034



PART NO.	MODEL	INLET & OUTLET CONNECTION*	FLOW	DIMENSIONS (H X W X D)		MAX. OPERATING PRESSURE	
				gpm	in	mm	psi
59372	DCF-20	20K Port Female	30-35	8.8 x 16.7 x 9.25	223 x 424 x 235	20,000	1,379
59379	DCF-20 Mag	3/4" MP Female	50	8.8 x 16.7 x 9.25	223 x 424 x 235	20,000	1,379



PART NO.	MODEL	INLET & OUTLET CONNECTIONS*	DIMENSIONS (H X W X D)		WEIGHT		MAX. OPERATING PRESSURE	
			in	mm	lbs	kg	psi	bar
59373	DCF-40	Jetstream 40K Port Female	7.9 x 14.8 x 12.7	200 x 380 x 320	26.2	11.9	40,000	2,758

Visual Safety System

Green	Blue	Orange
15,000 PSI	20,000 PSI	40,000 PSI
1,034 Bar	1,379 Bar	2,750 Bar



TOTAL BLASTING
water jetting technologies



FOOT GUNS